



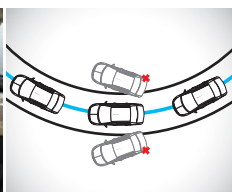
PRESENTING THE MANZA ELAN CELEBRATION EDITION.



90PS ENGINE



DUAL FRONT AIRBAGS



ANTILOCK BRAKING SYSTEM



RICH EBONY BLACK INTERIORS WITH LEATHER FEEL SEATS



REVERSE PARKING SENSORS

A CLASS APART

FEATURES

	NEW AQUA	NEW AURA	NEW AURA (ABS)	NEW ELAN	NEW CELEBRATION
CAR INFOTAINMENT					
2 DIN Music System with AM/FM/MP3/CD Playback & Audio Equaliser with					
- Audio Controls on Steering Wheel	○	●	●	●	●
- Blue 5 (Bluetooth Connectivity)	○	○	●	●	●
- USB (MP3/WMA) Playback	○	●	●	●	●
- Auxiliary Input	○	●	●	●	●
- Infrared Remote for Audio	○	●	●	●	●
- Four Speakers (Front Door:2, Rear Door:2) 2 Tweeters	○	●	○	○	○
- Four Speakers (Front Door:2, Parcel Shelf:2) 2 Tweeters	○	○	●	●	●
Driver Information System with					
- Digital Clock	●	●	●	●	●
- Fuel Consumption, Distance to Empty and Ambient Temperature Indicator	○	●	●	●	●
INTERIOR					
Full Fabric Seats NEW	○	●	●	●	○
Leather Feel Seats NEW	○	○	○	○	○
Interior Colour Scheme NEW		Ebony Black and Beige	Ebony Black and Beige	Burgundy and Vanilla Beige	Ebony Black and Beige
Storage Pockets in Front/Rear Door	●	●	●	●	●
Storage Tray under Co-driver Seat	●	●	●	●	●
Bottle Holder on Floor Console	●	●	●	●	●
Glove Box with Card Holder & Pen Holder	●	●	●	●	●
Front Power Outlet	●	●	●	●	●
Tachometer with Critical Rev. Indicator	●	●	●	●	●
Illuminating Ring around Keyhole	○	●	●	●	●
Light Intensity Adjustment for Instrument Cluster	○	●	●	●	●
Front and Rear Cabin Lights (with Twin Spot Lights)	●	●	●	●	●
Vanity Mirror on Co-driver's Sunvisor	●	●	●	●	●
Anti-glare Interior Rear View Mirror	○	●	●	●	●
EXTERIOR					
Tinted Door and Tailgate Glass	●	●	●	●	●
Black Tape on Exterior Sash Area	●	●	●	●	●
Body Coloured Rubrails	●	●	●	●	●
Body Coloured Outer Door Handles	○	●	●	●	●
Chrome Strip in Hood	●	●	●	●	●
Chrome Inserts on Rubrails and Door Handles	○	○	○	●	●
7 Speed Front Wiper with Smart Wipe	●	●	●	●	●
Motorised Clear Lens Headlamps	●	●	●	●	●
Clear Lens Side Indicator Lamps	●	●	●	●	●
Rear Demister	○	○	○	●	●
Follow Me Home Headlamps NEW	○	○	○	●	●
Front Fog Lamps	○	●	●	●	●
Rear Fog Lamps	○	●	●	●	●
Chrome Strip around Front Fog Lamps NEW	○	○	○	●	●
External Roof Antenna	○	○	○	●	●
15" Wheels with Full Wheel Caps	●	●	●	○	○
Dual Tone Alloy Wheels NEW	○	○	○	●	●
Outer Rear View Mirror on Co-driver Side	●	●	●	●	●
Body Coloured Outer Rear View Mirror	○	○	○	●	●
Electrically Controlled Outer Rear View Mirror	○	○	○	●	●
Chrome Bottom Weather Strip	○	○	○	●	●
Exclusive Tyrian Wine Colour NEW	○	○	○	●	●
Exclusive Celebration Badge NEW	○	○	○	○	●
SAFETY AND SECURITY					
Collapsible Steering	●	●	●	●	●
High Mount LED Stop Lamp	●	●	●	●	●
Child Lock on Rear Doors	●	●	●	●	●
Immobiliser	●	●	●	●	●
Central Locking	●	●	●	●	●
Remote Controlled Keyless Entry	○	○	○	●	●
Warning Buzzer for Driver Door Open with Key/Headlamp/Tailamp ON	○	○	○	●	●
Warning for Seat Belt not Fastened	○	○	○	●	●
ABS (with EBD)	○	○	○	●	●
Dual Front SRS Airbags	○	○	○	●	●
Retractor, Pretensioners & Load Limiters on Front Seat Belts	○	○	○	●	●

COLOURS

TYRIAN WINE*

DEW WHITE

JET SILVER#

MONARCH RED#

SIENNA GOLD#

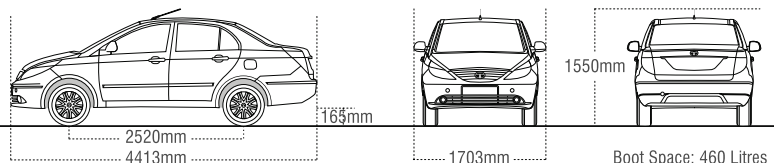
	NEW AQUA	NEW AURA	NEW AURA (ABS)	NEW ELAN	NEW CELEBRATION
COMFORT AND CONVENIENCE					
HVAC with Electric Controls	●	●	●	●	●
Tilt-adjustable Power Steering	○	○	●	●	●
Power Windows - Front	●	●	●	●	●
Power Windows - Rear	○	○	●	●	●
One Shot Power Window - Down Movement Driver Side	○	○	○	○	○
Power Windows Operation up to 30s after Ignition 'OFF'	○	○	○	○	○
Adjustable Head Rest on Front Seat	●	●	●	●	●
Lumbar Support on Driver's Seat - Fixed	○	○	○	○	○
Lumbar Support on Driver's Seat - 2 Way Adjustable	○	○	○	○	○
Height Adjustable Driver's Seat	○	○	○	○	○
Rear Seat with 100% Foldable Back	●	●	●	●	●
Adjustable Rear Seat Head Restraint	○	○	○	○	○
Rear Seat Centre Armrest	○	○	○	○	○
Cup Holder on Rear Seat Centre Armrest	○	○	○	○	○
Boot Lamp	●	●	●	●	●
Parking Audio Assist NEW	○	○	○	○	○

SMS 'MANZA' to 5616161. Toll Free Number: 1800 209 7979.

Tata Motors Passenger Car Business Unit: Head Office- One Forbes, 5th Floor, Dr. V B Gandhi Marg, Mumbai - 400 023.

Accessories shown in the picture and features mentioned in the text may not be part of the standard equipment. The contents are not binding and are subject to change without notice. These are indicative specifications for reference only. Colours may not match the actual colours due to printing limitations. You can avail of the 24+12/24 Month Extended Warranty option.

DIMENSIONS



FUEL TANK CAPACITY: 44 Litres

WEIGHT (kg)	QUADRAJET90	SAFIRE90
Kerb Weight	1200 - 1210	1100 - 1125
GVM	1650 - 1660	1575 - 1595

SPECIFICATIONS

ENGINE	QUADRAJET90	SAFIRE90#
Emission Norms	BS4	BS4
Type	4 Cylinder, Common Rail, Diesel	4 Cylinder, MPFI, Petrol with Intelligent Port Resizer
Engine Capacity	1248 cc	1368 cc
Max. Power	90PS @ 4000RPM	90PS @ 6000RPM
Max. Torque	200Nm @ 1750-3000RPM	116Nm @ 4750RPM

TRANSMISSION

C549, 5+1 Speed Manual Gearbox

SUSPENSION

Front: Independent, Lower Wishbone, McPherson Strut with Coil Spring
Rear: Semi-independent, Twist Beam with Coil Springs and Hydraulic Shock Absorbers

STEERING

Type: Power Assisted Rack & Pinion - Hydraulic, Tilt-adjustable
Turning Circle Radius: 5.1m

BRAKES

Type: Vacuum Assisted Independent Dual Circuit Diagonal Split Hydraulic Brakes through Tandem Master Cylinder
Front: Ventilated Disc Rear: Drum

WHEELS AND TYRES

Wheels: 5.5 J x 15 Tyre: 185/60 R15 Tubeless Radials

SEATING CAPACITY: 5

DEALER STAMP

800 SERVICE CENTRES ACROSS 525 CITIES. THE 2ND LARGEST SERVICE NETWORK IN INDIA.

*Available only in Aura ABS, Elan and Celebration. # Not available in Celebration Edition.

www.tatamanza.com