



**THE INCREDIBLE NEW VOLVO XC60.**

Volvo. for life



## DESIGNED TO BE DISTINCTIVE.

The stunning new XC60 signals the onset of a new era of modern Scandinavian design. The core design DNA is strikingly simple, yet unique. The same core fluidly embraces emotional aspects, such as Sensuality, Boldness and Expressiveness. Its muscular shoulder-line smoothly blends in to a curvaceous rear. The trapezoid grille promotes premiumness and sleekness. The rear tail lamp cluster with micro-optics and LED technology, adds sheer distinctiveness and expression to its visual appeal. The XC60 sports character, confidence, contours and a powerful road stance. Its exquisitely designed interiors offer a lap of luxury. One could read a million words to fathom the sheer craftsmanship of Scandinavian design. Or simply get behind the wheel and experience it.





## SO PLUSH, ONE COULD LIVE IN IT.

The new Volvo XC60 is sure to elevate the driver in more ways than one. Behind the wheel there's no doubt who's in command. Everything from the multi-adjustable driver's seat to the slightly angled centre console, is designed to empower the driver. Controls and instruments connect intuitively and when needed, there's on-board intelligence to further support the driver. Just about everything you need is a mere touch of a button away. Be it the panoramic roof, centre console controls or power tailgate. The technologically advanced infotainment system - Sensus, allows connectivity with an iPod, MP3 Player and DVD Player with Bluetooth. Easily accessible, the audio controls are located conveniently in the steering wheel. Whichever way one looks at it, here's a vehicle one would hate to get out of.





## TAKING TECHNOLOGY TO THE INTUITIVE LEVEL.

### Laser Assisted Automatic Braking - City Safety

The City Safety comes as a world-first standard feature from Volvo. At speeds of up to 50 kmph, laser beams mounted at the top of the windscreen detect the vehicle up to 6 m in front of the XC60 and also detect whether it's moving. Should you take your eyes off a potential shunt, the City Safety feature takes action. Between 0-15 kmph, the XC60 will stop itself to avoid a collision. And between 15-50 kmph, the XC60 will automatically reduce its speed and substantially reduce the impact. Since 75% of the world's collisions occur at speeds less than 30 kmph, the City Safety feature is Volvo's way of making urban driving a safer, more enjoyable experience.



## **SO RESPONSIBLE, IT CAN CONTROL ITSELF.**

### **Haldex All Wheel Drive with Instant Traction™**

The Haldex All Wheel Drive is an electronically controlled system that distributes engine power between the front and rear wheels quickly and automatically, depending on which wheel pair (front or rear wheels) has the best grip at that moment. The system helps enhance stability and reduces under/over steering and contributes to increased driver control and a comfortable ride. The system is equipped with Pre-tensioners that improve take-off speed and deliver higher traction on slippery surfaces.

### **Hill Descent Control System (HDC)**

When driving down inclines, press a button and the XC60 will control its speed. Both in forward and reverse motion.

The technologically unbeatable Hill Descent System makes it possible for the driver to focus completely on the steering.

If the driver intervenes via brake or accelerator the HDC automatically disengages itself. This system works even at 45° inclines.



## AN SUV THAT CAN CHANGE ITS CHARACTER. AT THE PRESS OF A BUTTON.

### Continuously Controlled Chassis Concept (Four-C)

The Four-C active chassis is a technology that monitors the car, road and driver, 500 times per second, simultaneously adjusting each shock absorber to maintain optimal handling. At the heart of Four-C is Volvo's semi-active suspension with continuously controlled Monroe-Öhlins shock absorbers. Furthermore, Four-C interacts with the DSTC system, engine, brakes and steering to promote your chosen handling style. There are three distinctive driving modes:

**Comfort:** This chassis mode isolates the car's occupants from irregularities on the road surface. This setting prioritises flexible dampening for smooth and gentle body movement and exceptional comfort. It's ideal for slippery or uneven roads.

**Sport:** For a sportier experience, this setting prioritises slightly stiffer dampening and acts faster. This results in more decisive body movement, precise handling and good ride comfort. Perfect for active driving.

**Advanced:** This is the high performance mode. This setting stiffens the dampeners for maximum road contact directly communicating the road surface to the driver. Prioritising immediate feedback rather than comfort, the advanced setting increases the range of driving dynamics.





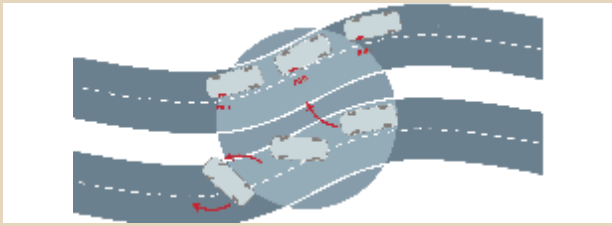
## **D5 TWIN-TURBO DIESEL ENGINE. THRILL COMES AS STANDARD FITMENT.**

At 205 hp, it takes performance, fuel efficiency and refinement to the next level. Featuring the latest Twin-Turbo and Piezo hi-pressure injector technology, these inspiring five-cylinder power plants give supreme torque up to 420 Nm. Smooth running characteristics and low noise levels further enhance the experience.

For a sportier feel, with more power across the rev range, the D5 features sequential Twin-Turbo. At low revs, a low pressure turbo charger engages to give instant power and a sharp take-off. At higher revs, a high pressure turbo-charger gradually takes over to provide fast overtaking. A maintenance-free Diesel Particulate Filter (DPF) effectively reduces soot particles in exhaust gases by up to 95% (and advanced emission control contributes to low nitrogen oxide levels). The D5 complies with Bharat IV emission standards.



205 hp  
420 Nm Torque



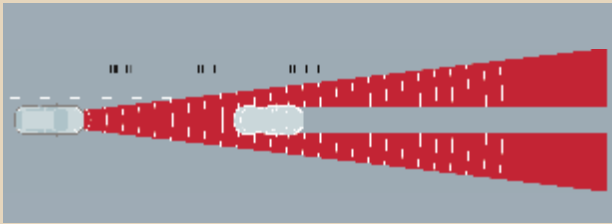
### Dynamic Stability and Traction Control (DSTC)

At the core of DSTC, sensors register the SUV's direction and roll rate. The system compares this with steering wheel movements as well as the actual rotation of the SUV's wheels. DSTC is able to detect a potential skid and help counteract this by reducing the engine's power output or braking on one or more wheels.



### Turn-with-Steering Lights - Active Bending Lights (ABL)

Compared to conventional halogen headlamps, Active Bending headlamps with Dual Xenon Technology expand your vision range by about 230%, which helps you gain 45 metres more for braking. And motorised lamps that turn up to 15° in either direction, give a 90% boost to your vision round bends at night.



### Adaptive Cruise Control (ACC) with Distance Alert

Helping the driver to keep a safe distance from vehicles in front at speeds over 30 kmph, ACC aids a more relaxed driving experience. When the radar sensor detects a slower vehicle in front, the speed automatically adapts to that vehicle.



### Driver Alert Control (DAC)

Driver Alert Control is a unique technology that can help alert a distracted driver at speeds over 65 kmph. Using signals from a digital camera to monitor the road ahead, DAC can compare erratic behaviour to your normal driving. If DAC detects any such anomaly it signals you immediately with an audible warning.



### Collision Warning with Auto Brake (CWAB)

Designed for highway driving, it can warn you if you're too close to a vehicle in front and can activate the brakes to help mitigate the impact. When Collision Warning senses that a collision is likely, it will alert you to act. CWAB supports driver-initiated braking by pre-charging the brakes to quickly prepare for panic braking.



### Lane Departure Warning (LDW)

At speeds over 65 kmph, Lane Departure Warning can prevent a vehicle from drifting off the road due to distractions. This function uses the digital camera to register the lane markings and helps monitor the car's position on the road.

# THE SAFEST VOLVO.



## Preventive Safety.



### Laser Assisted Automatic Braking - City Safety

City Safety collision avoidance technology is a Volvo world-first standard feature for safer urban driving. At speeds up to 50 km/h, this laser-based technology can sense if a vehicle in front, within 6-8 meters, is at a standstill or is moving slower. As City Safety senses an impending collision, the brakes are pre-charged to act faster on your response.

# TILL DATE.



## Protective Safety.



### Side Impact Protection System (SIPS)

In a side impact, Volvo's unique Side Impact Protection System (SIPS) helps distribute the crash forces across the car's body, away from the occupants. The dual-chamber side airbags in the front seats help protect the chest and hip, while the Inflatable Curtain (IC) helps protect the heads of both front and rear outboard occupants. It also stays inflated for some seconds to provide prolonged protection for subsequent impacts.



### Rear Impact

In a rear impact the rear deformation zones will help absorb crash energy. The fuel tank is designed to remain well protected in front of the rear axle. The head restraints help protect the neck and spine, and Volvo's unique Whiplash Protection System (WHIPS) cradles the front seat occupants in a controlled manner to help prevent whiplash injuries.



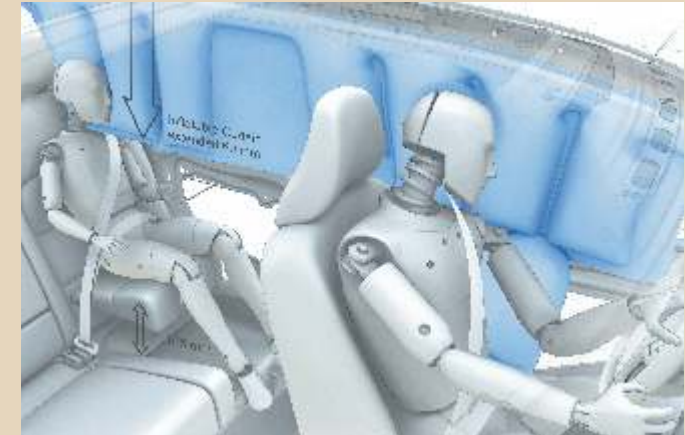
### In a Frontal Collision

The patented frontal structure will yield to help absorb and disperse crash energy. The compact powertrain is designed to help optimise deformation. Inside the car, safety belts interact with the collapsible steering column and dual-stage airbags to help keep the occupants out of harm's way.



### Restraint Technologies

In a collision, Volvo's restraint technologies interact to help reduce the impact. The **safety belts with pre-tensioners** activate within a thousandth of a second in the event of a collision and tighten the belt to help keep the occupants securely restrained. The front seat safety belts then release a little so that the driver and passenger are cushioned by the airbags in a controlled manner. Helping to optimise protection, the **dual-stage airbags** adapt the level of inflation depending on the force of the collision. The driver's airbag also interacts with the deformation of the collapsible steering column.



**Dual-chamber side airbags** in the front seats help reduce the risk of serious injuries in a side collision. Two separate chambers are inflated at different pressures to help optimise protection, of the chest and hip, of the front seat occupants.



Leather/Classic wood steering wheel,  
Soft Beige with Silk metal inlay



Leather-clad steering wheel,  
Soft Beige with Silk metal inlay



Leather/Classic wood steering wheel,  
Charcoal with Silk metal inlay



Leather-clad steering wheel,  
Charcoal with Silk metal inlay



Leather/Classic wood gear knob  
Soft Beige, Geartronic



Leather-clad gear knob  
Soft Beige, Geartronic



Leather/Classic wood gear knob  
Charcoal, Geartronic



Leather-clad gear knob  
Charcoal, Geartronic



Nordic Light Oak trim



Brushed aluminium trim



Classic wood trim



Leather Offblack/Soft Beige  
Brushed Aluminium centre console, Charcoal leather-clad steering wheel and gear knob



Leather Offblack, G100  
Nordic Light Oak centre console, Charcoal leather-clad steering wheel and gear knob



Leather Soft Beige/Espresso Brown, G116  
Nordic Light Oak centre console, Soft Beige leather-clad steering wheel and gear knob



Leather Soft Beige, G112  
Classic wood centre console, Soft Beige leather-clad steering wheel and gear knob



Roof Rail, Front Bumper Bar, Side Scuff Plate



Rear Seat Entertainment



Load Compartment Mat, Reversible and Foldable



Running Board

# CUSTOMISED STYLING FEATURES. BECAUSE EVERYONE'S DIFFERENT.

## Interior



### Dual Rear Seat Entertainment (Dual RSE)

An entertainment system with dual DVD players and dual 7" screens, is smartly integrated in the front head restraints. Sound is provided via the car's audio system or wireless headphones.



### Front & Rear Park Assist Camera

It aids the driver in parking and reversing. The system uses the RTI screen, a camera discretely located over the license plate and on-screen guiding lines to provide extra assistance for smooth parking. While reversing the system turns on automatically and alerts the driver of any obstacle that may lie in the path.

## Exterior



- Matt Aluminium Front Bumper Bar
- Matt Aluminium Skid Plates, Rear Bumper
- Matt Aluminium Side Scuff Plates
- 19" Achilles Wheels
- Diamond Cut/Dark Grey Matt Split



## VOLVO XC60 - D5 TWIN TURBO DIESEL

### Climate

Air Quality System	S
Clean Zone Interior Software	S
Electronic Climate Control	S
IR Reflective Wind Screen	O
Tinted Windows	O
Panoramic Power Sunroof	O

### Locking and security systems

Basic Alarm	S
Interior Movement Sensor (IMS)	S
Level Sensor	S
Immobiliser	S
Key Integrated Remote Control, Central Locking (KIR)	S
Home Safe Lightning	S
Approach Light	S
Power Child Lock, Rear Doors	S
Double Locking Door Locks	S
Global Open/Close Doors+Sunroof	S
Auto Up/Down Power Windows, All Doors	S
Personal Security Communicator with Keyless Drive	O
Laminated Windows (Includes WRG on Front Side Windows)	O
Water Repellent Front Side Windows	O

### Seats

Leather Seats	2-tone or single tone
Power Seat Driver + Memory for Seat and Ext. Mirrors	S
Power Seat Passenger	S
Manually Foldable Rear Headrests	S
Integrated 2-Stage Booster Cushions, Outer Positions	O

### Interior

Classic Wood Decor Inlays	S
Leather Steering Wheel with Decor Inlays, 4 Spoke	S
Leather / Classic Wood Gear Shift Knob (Automatic)	S
"Watch Dials, Combined Instrument"	S
Automatically Dimmed Inner Mirror	S
Illuminated Vanity Mirror, Driver	S
Rear Armrest with Cupholders and Storage	S
Textile Floor Mats (4 pieces)	S
Parking Ticket Holder	S
Front Cupholders in Tunnel Console	S
Storage in Front Doors, behind Centre Console & Front Armrest	S
Aluminium Decor Inlays	O

Nordic Light Oak Decor Inlays	O
Classic Wood Steering Wheel, 4 Spoke	O

### Cargo area

Power Operated Tailgate	S
12V Power Outlet, Cargo Area	S
Warning Triangle	S
Temporary Spare T125/80R17	S
Jack	S

### Exterior

Bright Roof Rails	S
Bright Decor Side Windows, Lower	S
Heated and Electrical Adjustable Outer Mirrors	S
Retractable Rear View Mirrors	S
Puddle Light	S
Turn-with-Steering Lights (Active Bending Light)	S
Headlight Washer, Low Flow	S
Volvo 'DNA' Lamps	S
Front Day Running Lights	S
Dual Headlights	S
Side Positioning Lights	S
Rear Foglight Auto-Off	S

### Support systems

Trip Computer, Extended with Speed Display	S
Cruise Control	S
Laser assisted automatic braking - City Safety	S
Park Assist Front and Rear	S
Hill Descent Control	S
Four-C Chassis (not with Nivomat)	S
Height/Length Adjustable Steering Wheel	S
Rain Sensor	S
Driver Alert System	O
Adaptive Cruise Control and Collision Warning with Auto Brake	O
Blind Spot Information System	O
Front & Rear Park Assist Camera	A

### Safety

2 Step Airbag, Drivers/Passenger Side	S
Passenger Airbag	S
SIPS Airbags	S
Inflatable Curtains	S
Whiplash Protection, Front Seats	S
Seat Belt Reminder, All Seats	S
Rear Belt Detection, Left, Right & Middle Belts	S
Pyrotechnical Pretensioners, Front / Rear Positions	S

Cut-Off Switch Passenger airbag	S
Isofix - Outer Position Rear Seat	S
Emergency Brake Assist, EBA	S
Emergency Brake Light, Flashing	S
High Positioned Rear Brake Lights	S
Intelligent Driver Information System 2	S

#### "Audio, Navigation & Tele"

Auxiliary Audio Input (AUX Connector)	S
USB & IPOD Function in Sensus	S
Audio Controls in Steering Wheel	S
Bluetooth Synchronisation for Phone	S
Head Phone Outlets, Rear Seat	S
DVD Player	O
Subwoofer	O
Navigation (RTI)	A
Rear Seat Entertainment	A

#### Transmission

Automatic 6-Speed AWD	S
Neutral Control Function	S

#### Engine installation

Fuel Tank Capacity 70 Litres	S
Dual Exhaust Tail Pipes	S

#### Chassis

Four-C Chassis	S
DSTC - Dynamic Stability Traction Control	S
Roll Stability Control	S

ABS - Antilock Brake System	S
Front Brake Discs 17"	S
Rear Brake Discs Ventialted	S
Electrical Parking Brake	S
Drive Away Release, Parking Brake	S

#### Wheels

SEGIN, Alloy 7.5 x 17"	S
Lockable Wheelbolts	S
Zephyrus 18"	O
Achilles 19"	A

#### Tyres

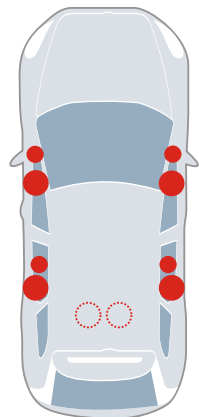
235/65R17 V	S
235/60R18 V	O

#### Driver information

Temperature Gauge, Outer	S
Clock	S
Tachometer	S

#### Accessories Exterior

Side Scuff Plates
Side Piano Steppes
Front Skid Plate
Rear Skid Plate Regular
Achilles 19" - Diamond-Cut/Dark Grey



#### High Performance Audio System with 8 Loudspeakers

This is a powerfully versatile system which promotes excellent transient reproduction and high power - quite simply superb sound.

- RDS Radio
- MP3 and WMA Compatible DVD player
- AUX input and USB Port in Front Centre Armrest
- 4x40 W Amplifier
- 8 High Performance Loudspeakers
- Bluetooth
- iPod connectivity



#### Recipe for Peace of Mind. Two Years Free Service

- Free service of your car upto 2 years/60,000 km (whichever is earlier. It however does not include replacement of tyres & batteries.)
- Takes care of all the consumables and scheduled maintenances
- 24X7 road assistance service to ensure a smooth ride

# CRAFTED BY US, ACCLAIMED BY THE WORLD.

## United States:

Most Innovative,  
International Truck of the Year

## Austria:

Auto Revue Award

## UK:

SUV of the Year,  
SUV of the Year (Fleet World Magazine)

## Australia:

Best SUV Over \$40,000,

## Germany:

Paul Pietsch Award 2009 - for City Safety,  
Bester Diebstahlschutz, Autoflotte Award,  
Safety Award "Genius", Auto Trophy 2009

## New Zealand:

New Zealand Automobile Association - 2009 Large Crossover,

## Belgium:

FuturAuto 2009,  
SUV of the Year 2009,  
4x4 SUV of the Year 2009

## Korea:

Good Design Award

## France:

"Innovation for Safety"

## Malaysia:

Car of the year - Luxury SUV,  
Car of the year - Special Mention Award - Safety Award

## Spain:

Best Safety Choice CZ Award "Small Off-Road 4x4"

## Thailand:

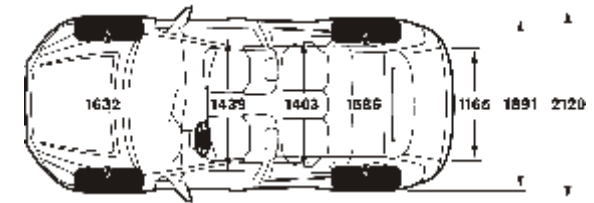
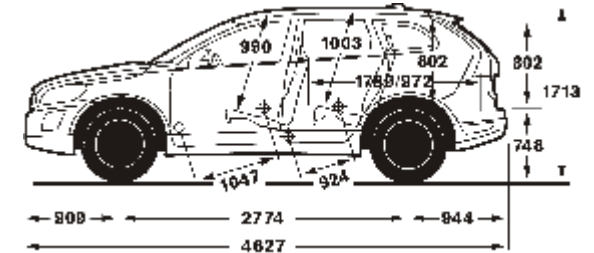
Car of the Year - Best SUV - Diesel",  
Volvo XC60 D5

## Ireland:

Auto Trophy 2008

## Russia

"Golden Klaxon", The Best Compact Crossover in Russia



## Personal car communicator (PCC)

Your car is locked.



Your car is unlocked.

There's somebody  
inside your car.

The alarm has been  
triggered.

Press here to see the  
actual status of your car  
(within a range of 60-100 m)  
or the car's status when you  
left it (outside the range).

VOLVO XC60	
Engine Type	D5 Twin-turbo diesel
Max. Power Output, hp	205
Max. Torque, Nm	420
Length (mm)	4627
Height (mm)	1713
Width (mm)	2120
Wheel Base (mm)	2774
Ground Clearance (mm)	230
Boot Space, with All Seats Up (L)	495



702 Flemenco Red metallic



494 Terra Bronze metallic



481 Cosmic White metallic

**SUBTLE, BOLD OR FLAMBOYANT. CHOOSE YOUR EXPRESSION.**



426 Silver metallic



484 Seashell metallic



614 Ice White



492 Seville Grey metallic



452 Black Sapphire metallic



466 Barents Blue metallic

**THERE'S MORE TO LIFE THAN A VOLVO.**

Volvo. for life



**THAT'S WHY YOU DRIVE ONE.**



Some features mentioned may be optional and not standard. Colours may not match due to printing limitations. Terms and conditions apply on the Free Service Package.

Dealer Stamp



Volvo Auto India. | [www.volvocars.in](http://www.volvocars.in)